

35 di 105
 FIFA Women's World Cup France 2019™
 7 June – 7 July

- GROUP STAGE
 - 09.06.2019 AUS 1-2 ITA
 - 14.06.2019 JAM 0-5 ITA
 - 18.06.2019 ITA 0-1 BRA
- ROUND OF 16
 - 25.06.2019 ITA 2-0 CHN
- QUARTER-FINAL
 - 29.06.2019 ITA 0-2 NED
- SEM-FINAL
- FINAL

Head coach
BERTOLINI Milena (ITA)

Technical staff
 D'ASTOLI Federico (Assistant coach)
 SORBI Attilio (Assistant coach)
 VIOTTI Cristiano (Goalkeeping coach)
 D'OTTAVIO Stefano (Fitness coach)
 PATTERI Fabio (Fitness coach)
 PERONDI Francesco (Fitness coach)

FIFA Women's World Cup France 2019™ squad

NO.	NAME	CLUB (COUNTRY)	MINS	G	A
1	GIULIANI Laura	Juventus FC (ITA)	450	0	
12	MARCHITELLI Chiara	CF Fiorentina (ITA)	0	0	
22	PIPITONE Rosalia	AS Roma (ITA)	0	0	
3	GAMA Sara	Juventus FC (ITA)	450	0	
5	LINARI Elena	Atletico Madrid (ESP)	450	0	
7	GIUGLIANI Ala	ACF Fiorentina (ITA)	417	0	1
13	BARTOLI Elisa	AS Roma (ITA)	341	0	
16	FUSETTI Laura	AC Milan (ITA)	0	0	
17	BOATTIN Lisa	Juventus FC (ITA)	97	0	1
20	TUCCHERI Linda	AC Milan (ITA)	0	0	
2	BERGAMASCHI Valentina	AC Milan (ITA)	307	0	
4	GALLI Aurora	Juventus FC (ITA)	301	3	
6	ROSUCCI Martina	Juventus FC (ITA)	19	0	
8	PARISI Alice	ACF Fiorentina (ITA)	0	0	
11	BONANSEA Barbara	Juventus FC (ITA)	396	2	
15	SERTURNI Annamaria	AS Roma (ITA)	15	0	
21	CERNOIA Valentina	Juventus FC (ITA)	450	0	1
23	GIUGLIANO Manuela	AC Milan (ITA)	450	0	3
9	SABATINO Daniela	AC Milan (ITA)	157	0	
10	GIRELLI Cristiana	Juventus FC (ITA)	279	3	
14	TARENZI Stefania	SSD Chievo Verona Valpo (ITA)	0	0	
18	MAURO Ilana	ACF Fiorentina (ITA)	97	0	
19	GIACINTI Valentina	AC Milan (ITA)	274	1	

Average possession

45% Total



21% Final third

38% Middle third

41% Defensive third

Shots per match



Shots per goal

Shots on target per match



Shots on target per goal

9
Goals scored

Goal location

4
Goals conceded

Goal location



6 open-play goals

3 set-piece goals

0 own-goals

1 open-play goals

3 set-piece goals

0 own-goals

- from corners 1
- from free kicks 1
- from penalties 1
- from throw-ins 0

- from corners 0
- from free kicks 2
- from penalties 1
- from throw-ins 0

NEL = Squad number; C = Clean sheets; MINS = Minutes played; G = Goals; A = Assists

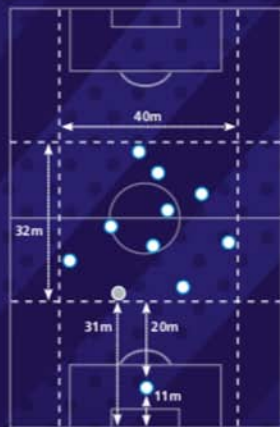
Team compactness

- In possession
- Out of possession

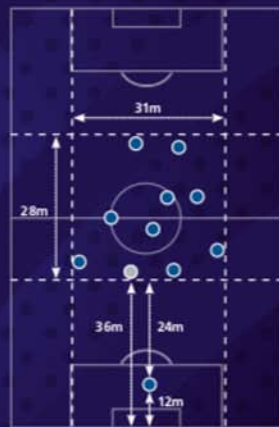


Team shape

- In possession
- Deepest defender



- Out of possession
- Deepest defender



The representation of player positions has been taken from one match. Team compactness and team shape data represents the team's Tournament average.

Team passing accuracy



Team passes 371



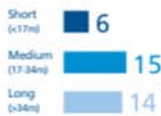
Goalkeeper passing success



Goalkeeper passes 35



Goalkeeper passing length



Defensive line breaks



Defensive line breaks against



Attacking entries



Attacking entries against



Opponents bypassed 264



Opposition defenders bypassed 40



Own players bypassed 355



Own defenders bypassed 53



% of final-third entries leading to shots 25%



>23 km/h 1,754m



19-23 km/h 4,937m



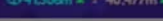
13-19 km/h 21,130m



7-13 km/h 36,160m



0-7 km/h 43,112m



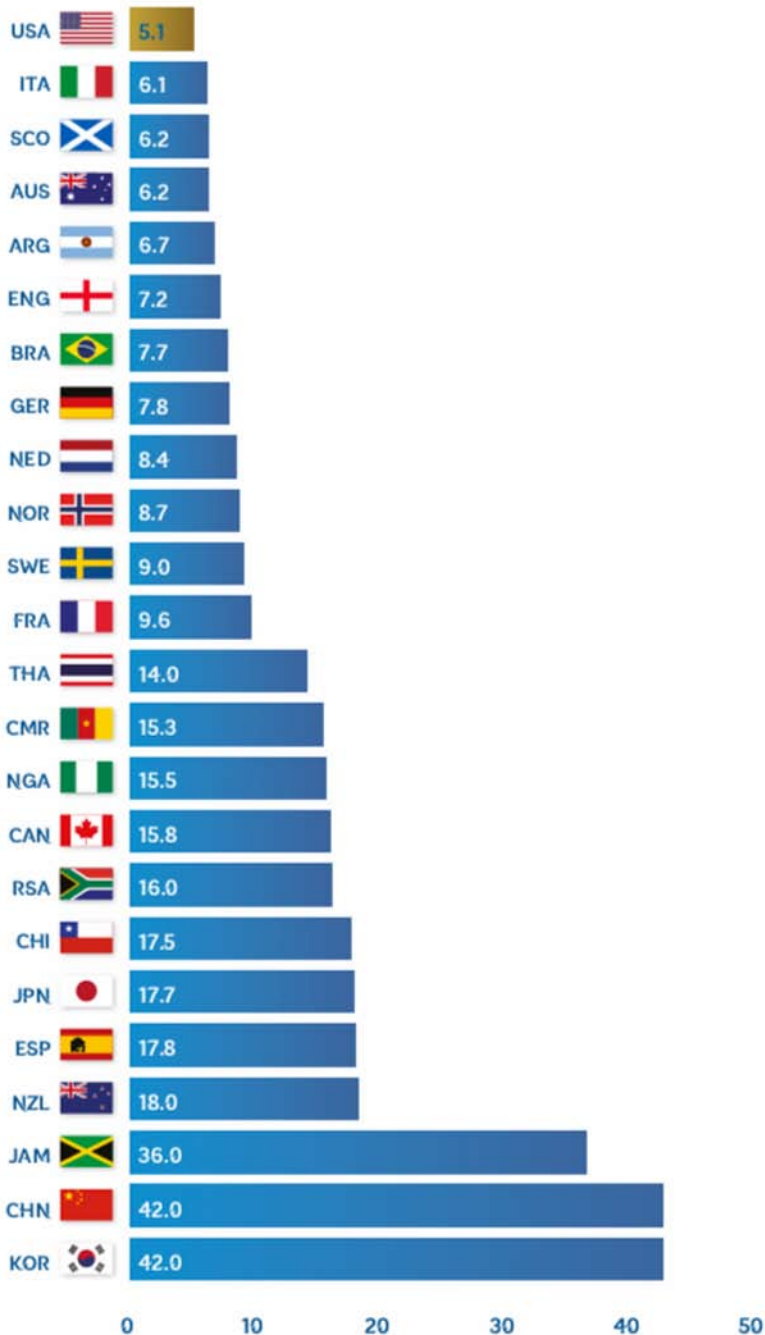
Total distance (km) 107.1

Distance >19 km/h 6,691

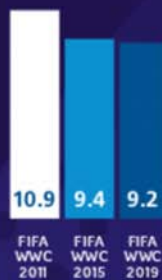
Distance >23 km/h 1,754

Activities >23 km/h 94

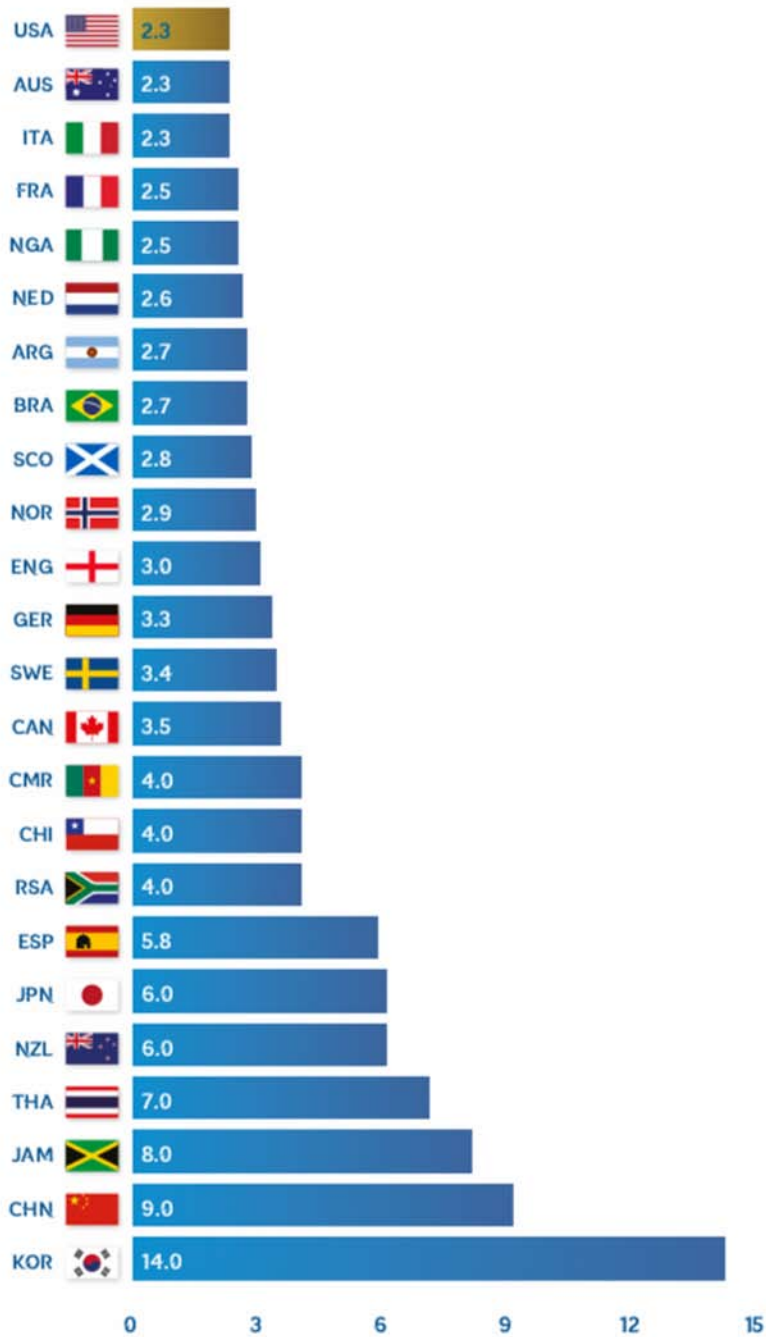
Shots per goal



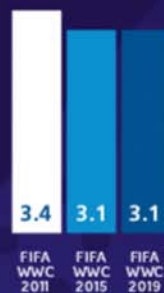
Tournament averages

FIFA
WWC
2011FIFA
WWC
2015FIFA
WWC
2019

Shots on target per goal



Tournament averages



Goalkeeper saves

